

1975089

STATE OF IDAHO
COUNTY OF KOOTENAI
AT THE REQUEST OF
Neighborhood Inc

2005 AUG 25 P 12:13

DANIEL J. ENGLISH

DEPUTY

ap
9.00

**ADDENDUM AND CORRECTION TO
DECLARATION OF COVENANTS, CONDITIONS
RESTRICTIONS AND RESERVATIONS OF EASEMENTS
FOR
"EDGEWATER" MILL RIVER SUBDIVISION, PHASE 1
A SUBDIVISION
LOCATED IN COEUR D'ALENE, IDAHO**

WHEREAS, on or about the 9th day of August, 2004, the undersigned Declarant caused to be recorded with the Recorder of Kootenai County, State of Idaho, that certain Declaration of Covenants, Conditions, Restrictions and Reservations of Easements for "Edgewater" Mill River Subdivision, Phase 1, which was duly recorded as Instrument #1893355, hereinafter referred to as "Declaration"; and

WHEREAS, the recorded Declaration erroneously failed to include those certain Exhibits referenced therein, specifically, Exhibit "A", a legal description of the subject property, and Exhibit "B", a depiction of the common areas to be conveyed to and maintained by the Association; and

WHEREAS, such descriptions are necessary and appropriate to properly ascertain the boundaries of the subject property and the common areas to be maintained for which the Association is responsible;

NOW THEREFORE, the Declarant does hereby submit as an Addendum to the original Declaration Exhibits "A" and "B" attached hereto and incorporated therein by reference as though fully made a part of the original Declaration recorded as Instrument #1893355 in the records of Kootenai County, State of Idaho.

DECLARANT:

NEIGHBORHOOD, INC.

By: *Clifford E. Mort*
CLIFFORD E. MORT, President

STATE OF IDAHO)
)ss
COUNTY OF KOOTENAI)

On this 25th day of August, 2005, before me, a Notary Public in and for said State, personally appeared CLIFFORD E. MORT, known or identified to me to be the President of Neighborhood, Inc., that he executed the within instrument on behalf of said corporation and acknowledged to me that such corporation executed the same.



Janae Gravelle
NOTARY PUBLIC for the State of Idaho
Residing at: *CATHERINE*
My Commission Expires: *6/13/09*

1975089

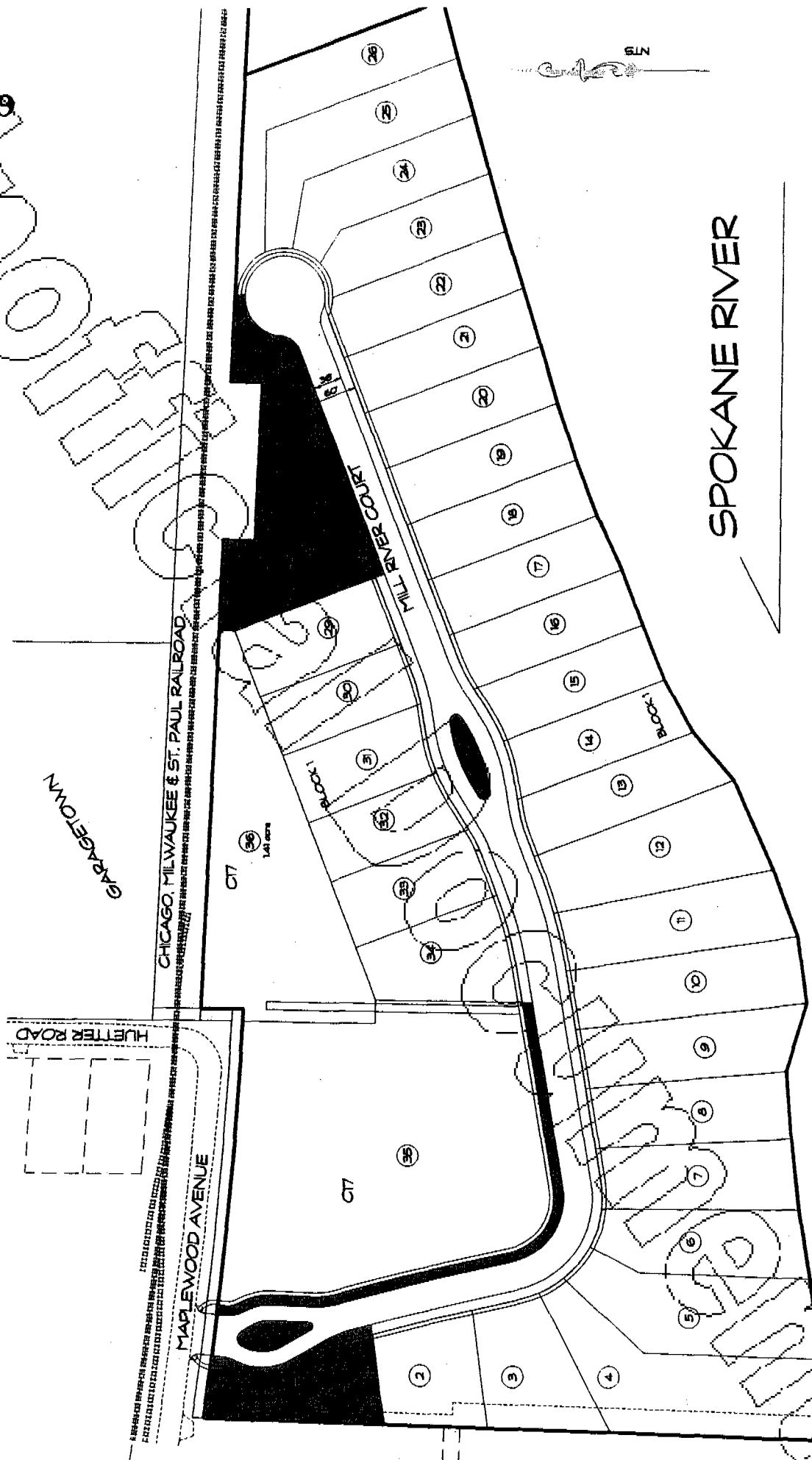
EXHIBIT "A"

Lots 1 – 26, Block 1 together with Lots 28-34, Block 1 of Edgewater at Mill River as recorded at Book J of Plats, Page 60, Records of Kootenai County.

Unofficial Document

1975089

EXHIBIT "B"



LEGEND
 ■ LANDSCAPE MAINTENANCE AREA